



Owner's Guide

VLR-502

Wireless System

Introduction

Thanks for purchasing a Vokal wireless microphone.

Please read this manual carefully before connecting the product and turning it on, in order to understand how to operate it correctly.

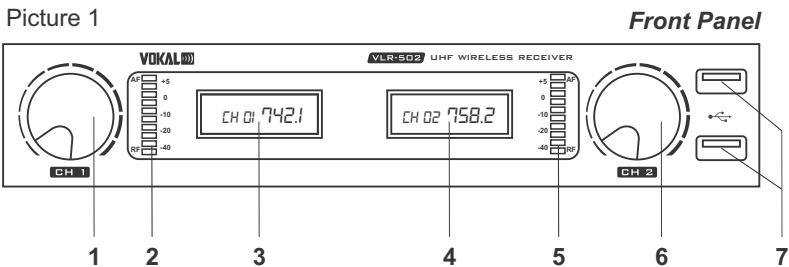
Please keep this manual for future reference.

- Don't use this system in places with too much radio-frequency interference.
- Don't allow this system to be connected and disconnected by unqualified persons.
- Don't place objects on the system receiver, since this may obstruct ventilation.
- Don't discard used batteries at inappropriate places.

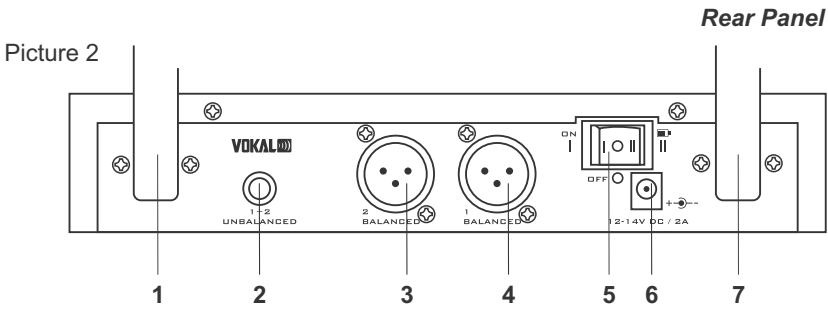
Package Contents

- 1x Receiver
- 2x Handheld microphone / transmitters
- 2x Rechargeable Lithium batteries
- 2x Adapters for use with AA batteries
- 1x AC Power adapter
- 1x Carrying case

Receiver characteristics and functions



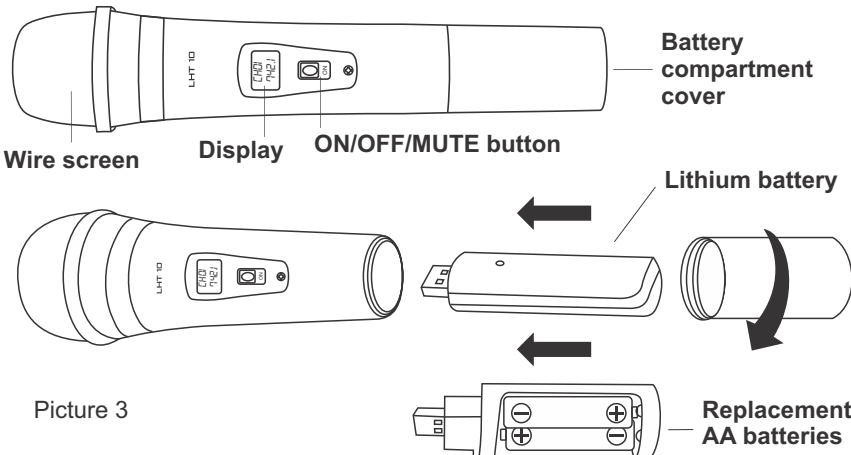
- 1- Channel 1 volume control knob
- 2- Channel 1 RF signal and audio level LED indicators
- 3- Channel 1 frequency indicator display
- 4- Channel 2 frequency indicator display
- 5- Channel 2 RF signal and audio level LED indicators
- 6- Channel 2 volume control knob
- 7- USB interfaces for rechargeable batteries



- 1- Channel 2 antenna
- 2- 1/4" jack audio output / 1+2 channels, unbalanced
- 3- Channel 2 balanced XLR audio output
- 4- Channel 1 balanced XLR audio output
- 5- ON/OFF/MUTE switch button
- 6- AC power adapter input jack (12-14 VDC, 2000 mA)
- 7- Channel 1 antenna

Operating the handheld microphone/transmitter

- 1 - After inserting the battery, you may turn-on the microphone/transmitter by switching the ON/OFF/MUTE button to the ON position.
- 2 - Go to the receiver and check the LED indicators to confirm if it is receiving RF and audio signals from the microphone / transmitter.
- 3 - When not in use, turn the microphone / transmitter OFF or switch the button to the MUTE position. This will mute the audio signal only, but the transmitter will still send RF signal to the receiver.
- 4 - To turn it off completely simply switch it to the OFF position.



Picture 3

Charging the Lithium batteries

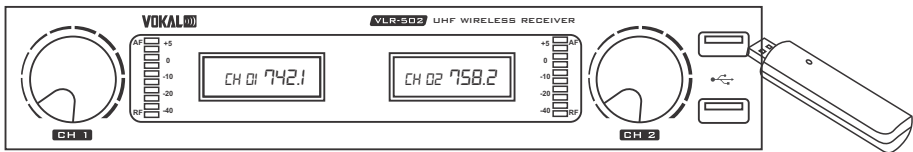
The rechargeable batteries may be inserted directly into the receiver's USB ports (Picture 4).

The LED indicator will be ON while the battery is being recharged, and it will turn OFF after the battery has been completely recharged.

If the Lithium batteries are out of charge, you may also use regular AA batteries with the included adapter.

IMPORTANT: the receiver USB ports are to be used exclusively to charge the original Lithium batteries of the Vokal VLR-502 system. Never insert any other batteries in order to avoid causing damages to the system.

Picture 4



Technical Specifications

Receiver

- PLL reception system
- Sensitivity: 60dB Signal/Noise ratio (12 dBu)
- Frequency response: 50Hz-20 KHz
- Signal/Noise ratio: >100dB
- Voltage: 100-240V

Microphone / Transmitter

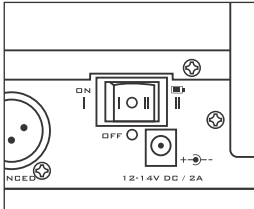
- RF output: 30mW
- Cartridge: Dynamic, unidirectional
- Average usage time: up to 6 hours of continuous use

Operational frequencies (MHz):

902.2 MHz	905.8 MHz	907.2 MHz	909.8 MHz
916.1 MHz	920.9 MHz	919.0 MHz	924.2 MHz
911.3 MHz	914.5 MHz		

Operating the system

1 - Connect the AC power adapter to the power outlet and insert the plug into the receiver's power input. Connect the audio cable to the desired audio output (XLR or 1/4" jack). Turn the receiver ON and put the antennas in an upward position.



Picture 5
(Rear Panel)

Note that the ON/OFF switch has 3 positions (Picture 5), being:

“ I ” to turn the receiver ON and charge the batteries at the same time;

“ O ” to turn the receiver OFF completely;

“ II ” to turn OFF the system reception, but keeping the USB ports active to recharge the Lithium batteries.

1 - Insert the charged Lithium batteries correctly into the battery compartment. To use the AA battery adapter, insert 2x 1.5V AA batteries following the correct polarity orientation (+/-) on the adapter and in the compartment. Remember to connect the Lithium batteries into the USB ports for recharging.

2 - Turn-on the microphone (transmitter) and the display will show the channel number and the UHF frequency, the RF LED indicator on the receiver will turn ON showing that the system is ready for use. Adjust the volume on the receiver, mixer and/or amplifier.

3 - If the audio or RF signals start failing, the most likely cause is low the battery charge. Exchange the batteries for new ones and recharge the Lithium batteries. If you need to use regular AA batteries, connect them through the AA batteries adapter, observing the correct +/- polarity.

4 - When speaking or singing through the microphone, keep a distance from 4cm to 8cm between the mouth and the microphone wire screen.

Troubleshooting

1 - The receiver display did not light-up after turning the receiver ON.

Check the power outlet plug to make sure it has power.

2 - When I talk on the microphone the audio LED indicator (AF) flashes but there is no sound.

Check the volume controls and the cable connections. Change the cables if necessary.

3 - The RF and audio (AF) signals are cutting-off at short distances.

- Check if there are obstacles between transmitter and receiver.
- Don't place the receiver or the transmitter on amplifiers, speaker cabinets or any other equipment that has a transformer or power supply, because the magnetic field caused by them may interfere with the signal reception.
- Check if there are antennas from TV sets, radio tuners or cell phones close by, since their magnetic fields may also interfere in the RF signal transmission.
- Places with metal structures may absorb part of the signal, causing RF transmission problems.
- Place the receiver where it will be free from obstacles and always above the height of people concentrations.

4 - The audio quality is bad.

The batteries may be low in charge. Recharge them or substitute for new ones.

WARRANTY

90 days from purchase date.

Imported and distributed by
Miami Audio Music Corp.
Made in China



Reseller

www.miamiaudiomusic.com